

PH-2B | 41350-200

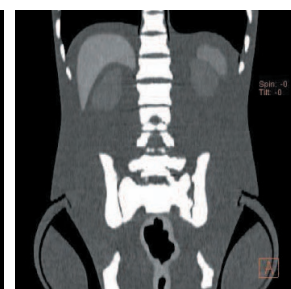
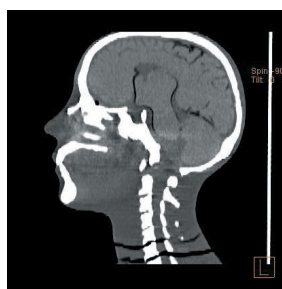
# CT Whole Body Phantom "PBU-60"



A unique, life size whole body phantom for CT provides a variety of educational application as well as visual evaluation in finding out optimal scanning conditions



SHOW MORE!



## FEATURES

- | The phantom includes full internal organs with close-to-human HU for each.
- | Radiology absorption and HU approximate to human body
- | Main joints have close-to human articulation
- | Phantom can be disassembled into 10 individual parts

## APPLICATIONS

- | CT
- | Plain X-ray
- | Basic patient positioning

## ANATOMY

Full internal organs

Internal organs	HU number at 80KeV
Brain	
Cerebrum	40
Mesencephalon	40
Cerebellum	40
Cerebral ventricles	10
Eye balls	20
Arteries with contrast medium (left half only)	250
Lungs	-1000
Pulmonary vessels	8
Trachea	trachea wall: 8 / inside: -1000
Heart	PBU-50: 8 / PBU-60: 40
Liver	70

Bony structure

Synthetic skull
Cervical vertebrae
Vertebrae
Clavicles
Ribs
Sternum
Scapula
Coxal bones
Femurs

Internal organs	HU number at 80KeV
Portal and hepatic veins	40
Pancreas	30
Kidneys	30
Gallbladder	20
Spleen	50
Seminal vesicle	25
Aorta	40
Cava	70
Ureter	ureteral wall: 30 / inside: 10
Urinary bladder	10
Prostate	50
Rectum	rectum wall: 70 / inside: -800
Sigmoid Colon	colon wall: 70 / inside: -800

## DESCRIPTIONS

### SET INCLUDES

1 whole body phantom	1 hand-fixture belt
1 head supporter	1 set of sample CT/X-ray data (DVD)
1 flat head screwdriver	manual

### SPECIFICATIONS

Phantom height:	Packing size:
165 cm	W92 x D57 x H38 cm/W36 x D22 x H15 in
65 in	W90 x D63 x H22 cm/W35 x D25 x H8.7 in
	W89 x D57 x H16 cm/W35 x D22 x H6.3 in
Phantom weight:	Packing weight:
50 kg / 110 lb	80 kg / 176 lb

### MATERIALS

Soft tissue: urethane based resin (density: 1.06)  
 Synthetic bone: epoxy resin (density: 1.31)  
 Skull: epoxy resin (density: 1.11)  
 \*Phantom has no metal parts or liquid structure

### OPTIONAL PARTS

41363-070	storage cases (consist of 2 boxes)
41350-200-16	body plates for PH-2/2B (BMI 32)
41350-200-17	body plates for PH-2/2B (BMI 40)

### PUBLICATION REFERENCES

Kim, S., & Jung, H. (2013). A Study on Performance of Low-Dose Medical Radiation Shielding Fiber (RSF) in CT Scans. International Journal of Technology, 4(2), 178-187. doi:10.14716/ijtech.v4i2.107